

2020

EXCELLENCE

PASSION DEDICATION VALUE OVERTIME

Welcome!

Professionalism - Reliability - Commitment

Quality • Safety • Research • Planning • Service • Price
ISO 9001 • ISO 11117:2008 • TC/DOT:2007

Accessories for compressed gas cylinders,
LPG cylinders, tanks and fire extinguishers.

Steel & Nylon Caps • Steel & ABS & Nylon Guards
Neck Rings • Flanges • Shrouds • Foot rings

New branches
forged & machined parts:
aluminium • brass • copper
pad printing machines



E
X
P
E
R
I
E
N
C
E

W
O
R
L
D
W
I
D
E

QUALITY

SAFETY

SECURITY

SERVICE

RELIABILITY



Contact



bripac group

headquarter:



centro artigianale • p.le del lavoro, 205
21044 Cavarina (Va) • Italy

phone +39-0331-212333

+39-0331-216100

fax +39-0331-219282

web www.bripac.it

e-mail info@bripac.it

contacts

Direction tibriata@bripac.it

Direction mbriata@bripac.it

Commercial scolombo@bripac.it

Commercial falaimo@bripac.it

Administration bmazzucchelli@bripac.it

Logistic mferrazzano@bripac.it

Logistic avago@bripac.it

Technical agallon@bripac.it

Information info@bripac.it

Pls find here below a link,
from which you'll be able to download our New 2020 Catalogue
<http://www.bripac.it/Catalogue2020.pdf>



News 2020

ABS & NYLON CAPS

for cylinders up to

100 kg.



100 kg.



ABS & NYLON GUARDS

for cylinders up to

100 kg.



100 kg.



60 kg.



ABS & NYLON GUARDS

for LPG cylinders up to

50 kg.



STEEL GUARDS

for cylinders up to

160 kg.





STEEL CAP WITH KNOB IN PVC

patented by bripec



dwg. 1.06-a,
1.06-b, 1.07-a, 1.07-b, 1.08-a
Standards ISO 11117:2008 TC/DOT:2007
for cylinders up to 140 kg.

Made in Italy
CREATING INNOVATIVE
EUROPEAN SOLUTIONS



- ✓ zinc plated inside and outside
- ✓ NO painting required
- ✓ plug with logo embossed
- ✓ 3"1/8 x 11U.N.
- ✓ ISO11117:2008 up to 140 kg.
- ✓ using ONLY zinc as neck rings
- ✓ NO rust
- ✓ plug with pad printed logo
- ✓ 3"1/2 x 11U.N.
- ✓ TC/DOT:2007 up to 140 kg.



STEEL GUARD WITH KNOB IN PVC

patented by bripec



dwg. 1.40-a
Standards ISO 11117:2008 TC/DOT:2007
for cylinders up to 150 kg.

Made in Italy
CREATING INNOVATIVE
EUROPEAN SOLUTIONS



- ✓ screw inside the ring for a better safety
- ✓ W80x11T.P.I. or 3"1/8x11U.N.
- ✓ grip for moving
- ✓ ISO11117/TC-DOT up to 160 kg.



ABS GUARD

patented by bripec



dwg. BB.01
Standards ISO 11117:2008 TC/DOT:2007
for cylinders up to 30, 50 kg.

Made in Italy
CREATING INNOVATIVE
EUROPEAN SOLUTIONS



ABS guard with screw



- ✓ assembled at cold or warm
- ✓ W80x11T.P.I. or 3"1/8x11U.N.
- ✓ different RAL colours
- ✓ weight 230 grams
- ✓ pad printing on 1 or 2 sides
- ✓ ISO11117/TC-DOT up to 30, 50 kg.



ABS
for cylinders
up to 50 kg

CAPS

patented by bripec

NYLON
for cylinders
up to 100 kg



dwg. BB.08
Standards ISO 11117:2008 TC/DOT:2007
for cylinders up to 50 kg.

Made in Italy
CREATING INNOVATIVE
EUROPEAN SOLUTIONS

dwg. BB.09
Standards ISO 11117:2008 TC/DOT:2007
for cylinders up to 100 kg.



EU type



US type

- ✓ light 350 grams
- ✓ easy assembly
- ✓ W80x11T.P.I.
- ✓ 3"1/8x11U.N.
- ✓ pad printing logo
- ✓ different RAL colours
- ✓ no rust
- ✓ cost reduction
- ✓ anti-theft products
- ✓ ISO 11117:2008
- ✓ TC/DOT:2007



LPG ABS & NYLON GUARD

patented by bripec



dwg. BB.29
Standards ISO 11117:2008 TC/DOT:2007
for cylinders up to 50 kg.

Made in Italy
CREATING INNOVATIVE
EUROPEAN SOLUTIONS

SOLUTION
300 grams

OPPORTUNITY IDENTIFICATION

EUROPEAN NEED
The opportunity to standardize
the old guards in steel
too heavy 1.400 grams
with new lighter material, Nylon

PROCESS ANALYSIS

PRODUCTIVITY
1.400
grams
steel

TEST DESIGN

STANDARDS
LPG Guard
- NYLON weight 300 grams
- ISO 11117:2008
cylinder up to 50 kg
vertical drop test
inclined drop test at 30°
axial test 288 kg (4 times)
axial test handle 100 kg



INNOVATIVE SOLUTION DESIGN

COLLABORATION
LPG Companies
Guard Project
bripec
Italy

- LIGHT
- Easy assembly
- Different RAL Colours
- Pad printing Flame, LOGO and/or instruction for use
- Thread 6x2,5S.I. or 6x3S.I.
- European Standardized Design
- Range of temperature -40°+80° at cold or warm
- Anti-theft products
- Filling Station Productivity Improvement
- Traditional LPG cylinder guard Cost Reduction
- European Price Agreement
- No rust



LPG ABS & NYLON GUARD

patented by bripec



dwg. BB.40-a
Standards ISO 11117:2008 TC/DOT:2007
for cylinders up to 50 kg.

Made in Italy
CREATING INNOVATIVE
EUROPEAN SOLUTIONS

dwg. BB.40-b
Standards ISO 11117:2008 TC/DOT:2007
for cylinders up to 50 kg.



Handles

- ✓ assembled at cold or warm
- ✓ weight 350 grams
- ✓ ISO11117/TC-DOT up to 50 kg.

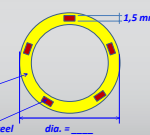


Bottom

- ✓ p.p./ABS material
- ✓ weight 80 grams
- ✓ ISO11117/TC-DOT up to 50 kg.



Suggestions for «wave» Guards
in Nylon and Bottom
in polypropylene



News 2020

Products



Steel CAPS EU type

Our Caps are **patented** by bripac and certified according to **ISO 11117:2008** and **TC/DOT:2007**.

Standards are engraved on the hexagon. They can be engraved with

marking, logo, etc.

They are supplied:

- raw
- zinc plated, inside and outside
- powder painted
- zinc & powder painted



Steel CAPS US type

Our Caps are **patented** by bripac and certified according to **ISO 11117:2008** and **TC/DOT:2007**.

Standards are engraved on the outside dia. They can be engraved with

marking, logo, etc.

They are supplied:

- raw
- zinc plated outside
- primer
- powder painted
- primer & powder painted



Steel GUARDS

Our Guards are **patented** by bripac and certified according to **ISO 11117:2008** and **TC/DOT:2007**.

Standards are engraved on the body. They

can be engraved with marking, logo, etc.

They are supplied:

- raw
- zinc plated
- powder painted
- zinc & powder painted



TOP Steel GUARDS

Our Guards are **patented** by bripac and certified according to **ISO 11117:2008** and **TC/DOT:2007**.

Standards are engraved on the body. They

can be engraved with marking, logo, etc.

They are supplied:

- raw
- zinc plated
- powder painted
- zinc & powder painted

Products



ABS&Nylon CAPS - GUARDS - SHROUDS for compressed & LPG gas cylinders

ABS & NYLON GUARDS for compressed gas cylinders

Our Guards are **patented** by bripac and certified according to **ISO 11117:2008** and **TC/DOT:2007**.

Standards are embossed on the body.

- for cylinders up to 30 kg.
- for cylinders up to 50 kg.

ABS & NYLON GUARDS for LPG gas cylinders

Our Guards are **patented** by bripac and certified according to **ISO 11117:2008** and **TC/DOT:2007**.

Standards are embossed on the body.

- for cylinders up to 50 kg.

Products



NECK RINGS-FLANGES-SPUDS

They are manufactured according to the drawing and/or sample of various customers, following their requirements.

There are mainly two types:
- hot forged from steel billet
- cold forged from steel plate

In both cases, high technology plants material to be transformed, without altering its mechanical features.

The subsequent machinings are carried out by means of a long tested production line, thus

ensuring customers that their requirements are fully met.

Both types of neck rings can be marked, embossed and/or engraved. The neck rings can be supplied raw or zinc plated.



LPG Accessories SPUDS-GUARDS

LPG Guards are **patented** by bripac and certified according to **ISO 11117:2008** and **TC/DOT:2007**.

Standards are engraved and/or embossed on the body.

They can be engraved and/or embossed and/or pad printed, with marking, logo, etc. Materials used are ABS, Nylon, steel and cast iron.

They are supplied:

- raw
- zinc plated
- powder painted
- primer & powder painted
- pad printed

LPG Neck rings & Guards, are manufactured according to customer's drawing and/or sample following their requirements.

They are hot forged from steel billet. High technology plants enable the raw material to be transformed, without altering its mechanical features.

Subsequent machinings are carried out by means of a long tested production line, thus ensuring the customers that their requirements are fully met.

Products



LPG Accessories Steel FOOT RINGS & SHROUDS

LPG Guards are **patented** by bripac and certified according to **ISO 11117:2008** and **TC/DOT:2007**.

Standards are engraved and/or embossed on the body. They can be engraved and/or embossed and/or pad printed, with marking, logo, etc.

Materials used are ABS, Nylon, steel and cast iron.

They are supplied:

- raw
- zinc plated
- powder painted
- primer & powder painted
- pad printed



DIP TUBE aluminium

Foot Rings & Shrouds

are manufactured according to customer's drawing and/or sample following their requirements.

Materials used are ABS, Nylon and steel.

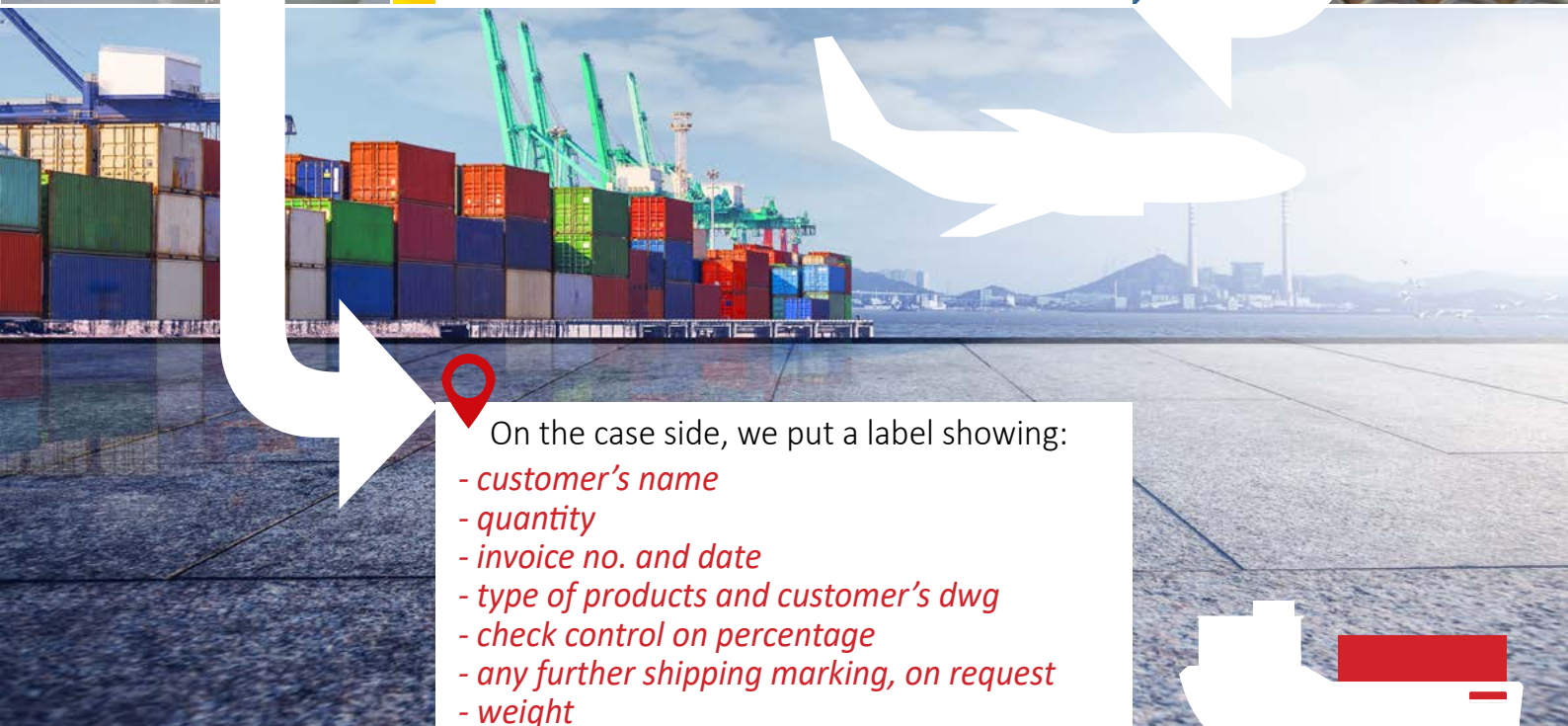
Packaging & Punctuality



Parts are usually packed into strong cartons or into wooden cases, placed on europallets and then sealed by a thermoretractable film. Pieces are placed on different layers, each one separated by a cardboard.



We give the top importance to transport, since it takes care of: ***safety***
standardized numerical control package, thanks to the method by layers



On the case side, we put a label showing:

- ***customer's name***
- ***quantity***
- ***invoice no. and date***
- ***type of products and customer's dwg***
- ***check control on percentage***
- ***any further shipping marking, on request***
- ***weight***

Standards



📍 Drop Test ISO 11117:2008

- The protection device shall be tested to prove that under rough handling conditions, the test valve maintains its operability
- This test shall be carried out with cap or guard at room temperature +20° C and at -20° or a lower temperature if specified (6.7.1)
- The protection device together with the valve for which it is intended shall be fitted to a test cylinder
- This assembly shall be dropped vertically at an angle of 30°, the cap or guard directed downwards. There shall be a distance of 1,20 mt between the lowest point of the guard or cap and the impact surface (6.7.5)

📍 Drop Test TC/DOT:2007

- Each cylinder with a valve must be equipped with a protective metal cap, other valve protection device or an overpack which is sufficient to protect the valve from breakage or leakage resulting from a drop of 2.0 mt./7 feet onto a non-yielding surface, such as concrete or steel
- Impact must be at an orientation most likely to cause damage, as specified in 173.4

- ✓ *Transportable Gas Cylinders Valve protection Caps and Guards for the industrial and medical gas cylinders drawings, construction and tests.*
- ✓ *Information and data set forth here are disclosed in confidence and are proprietary and property of bripac srl and shall not, without its prior written permission, be used, duplicated or disclosed in whole or in part for any purpose other than authorized official business of bripac srl.*
- ✓ *bripac srl is not responsible for any improper or negligent use of the material. Not conforming material must be reported not later than 8 days from receipt. No claims for damages will be accept, in case that our material results to be already products (compressed gas cylinders, LPG cylinders, tanks, fire extinguishers, etc.).*



Steel Cap

dwg.1.01

Standards ISO 11117:2008
for cylinders up to 160 kg.

engraving

- bripac
- ISO PA
- 160 kg.
- yy.zz



engraving

- LOGO

no.2 holes

- a) › dia.10 mm.
- b) › dia.20 mm.

thread

- W80x11T.P.I.





Steel Cap

dwg.1.02

Standards ISO 11117:2008
for cylinders up to 160 kg.

engraving

- **bripac**
- **ISO PA**
- **160 kg.**
- **yy.zz**



engraving

- **LOGO**

no.2 holes

- a) › **dia.10 mm.**
- b) › **dia.20 mm.**

tapering



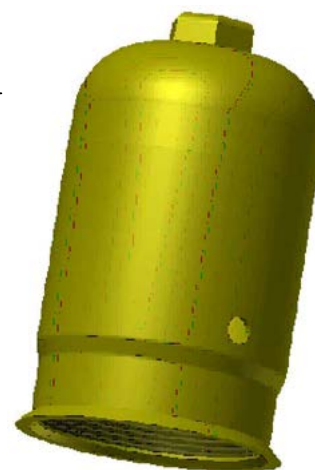
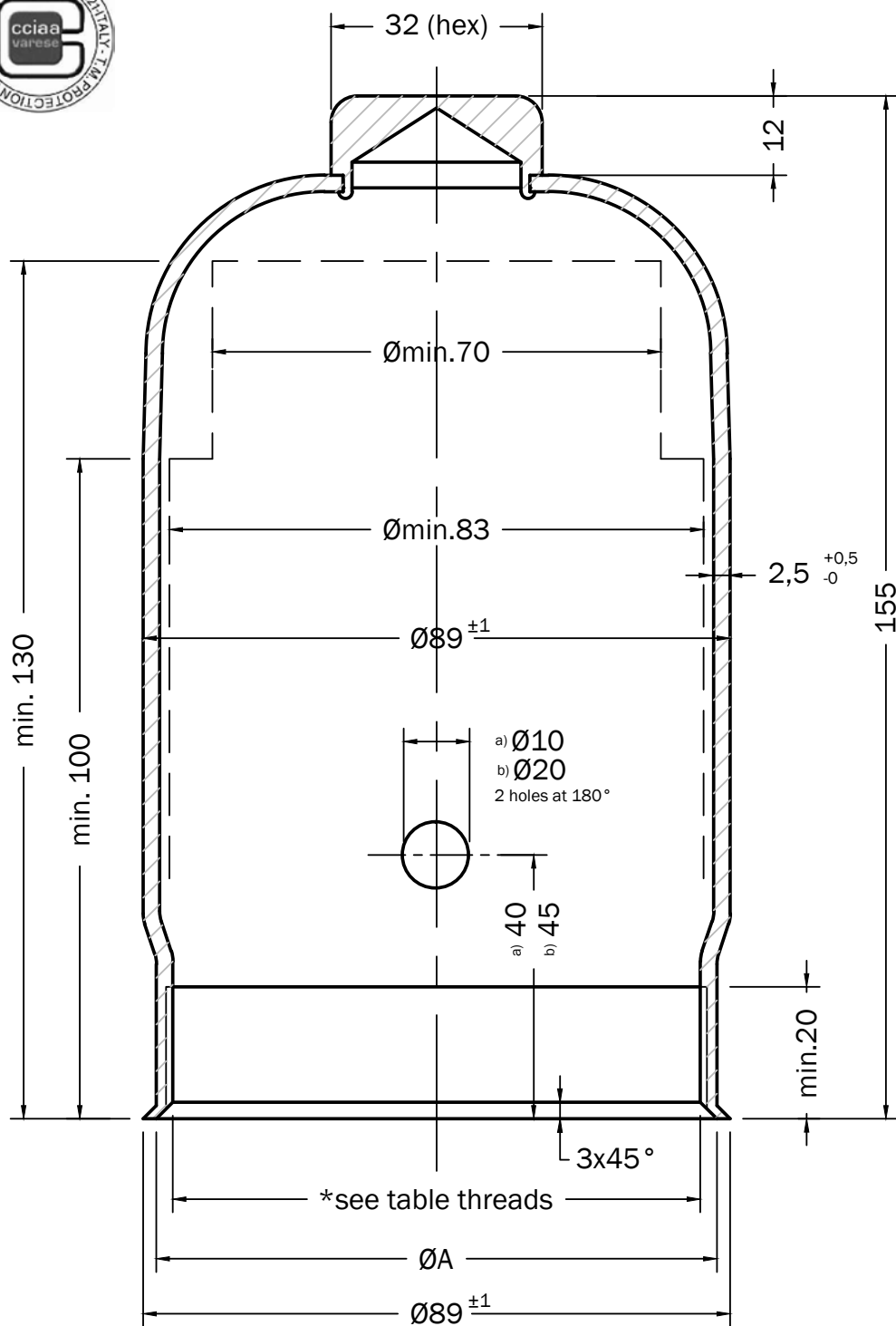
thread

- **W80x11T.P.I.**
- **3" 1/8x11U.N.**



engraving

- BRIPAC
- ISO PA
- 160 Kg
- yy.zz



pos.	table threads	ØA
1.	W80x11T.P.I.	85
2.	3"1/8x11U.N.	85
...	on request	...

REV.		CAP EN ISO 11117		MATERIAL		STEEL	
CUSTOMER		CUST.DWG.		MATERIAL		CHECKED	M. B.
LIMITS OF ACCURACY		<div></div> <div>Cavaria (VA) Italy • www.bripac.it • info@bripac.it</div> <div>Information and data set forth here are disclosed in confidence and are proprietary and property of bripac srl and shall not, without its prior written permission, be used, duplicated or disclosed in whole or in part for any purpose other than authorized official business of bripac srl.</div>				DRAWN	S. B.
UNLESS OTHERWISE SPECIFIED: TOLERANCES: decimals ± 2mm angles ± 5°						DATE	17-10-2017
						SCALE	1:1
						dwg.no.	1.02



Steel Cap

dwg.1.04

Standards ISO 11117:2008
for cylinders up to 160 kg.

engraving

- bripac
- ISO PA
- 160 kg.
- yy.zz



engraving

- LOGO

no.2 holes

- a) › dia.10 mm.
- b) › dia.20 mm.

thread

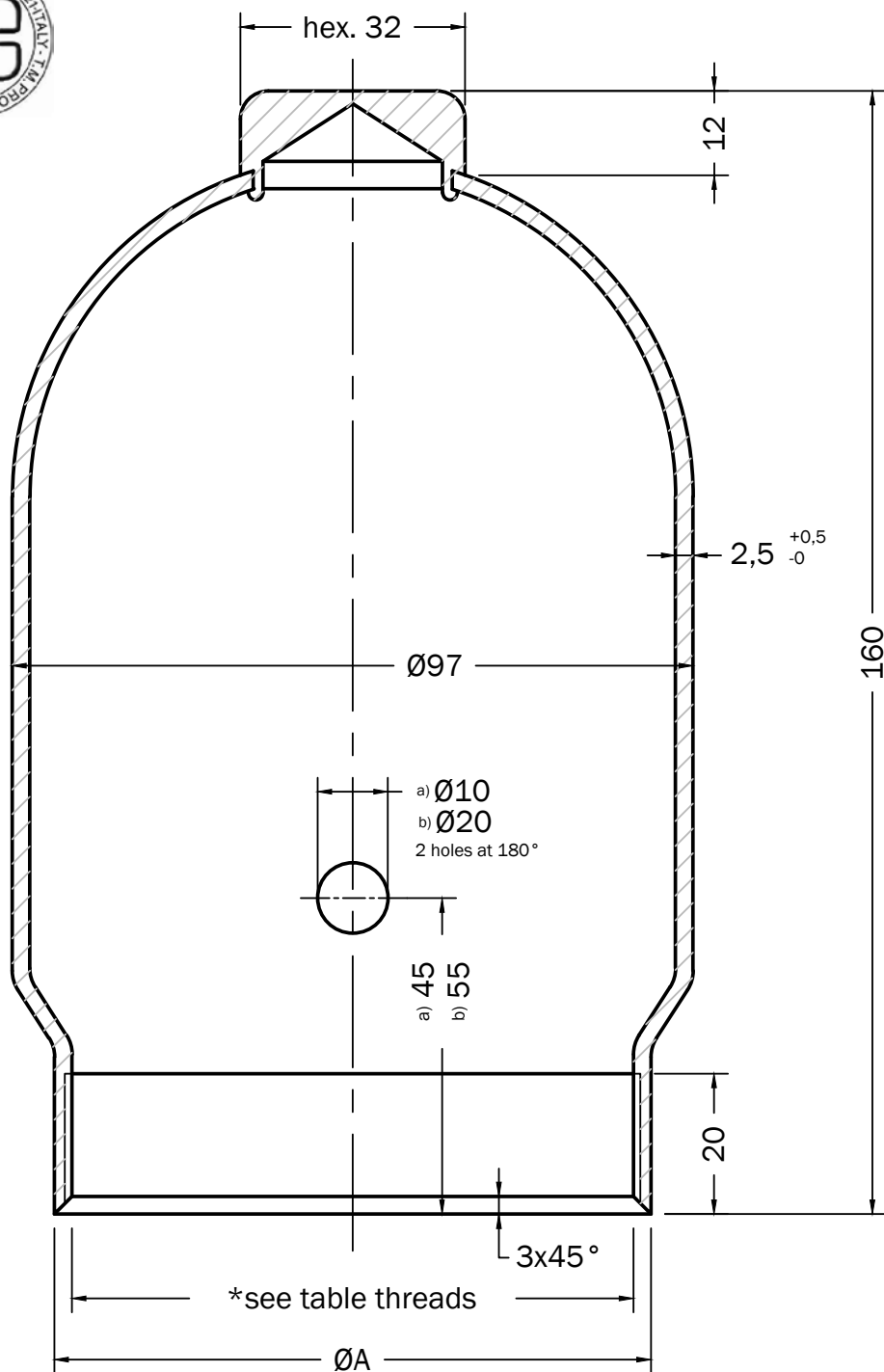
- W80x11T.P.I.
- 3" 1/8x11U.N.





engraving

- BRIPAC
- ISO PA
- 160 Kg
- yy.zz



pos.	table threads	ØA
1.	W80x11T.P.I.	85
2.	3"1/8x11U.N.	85
...	on request	...

REV.		CAP EN ISO 11117		MATERIAL		STEEL	
CUSTOMER		CUST.DWG.		MATERIAL		CHECKED	M. B.
LIMITS OF ACCURACY		<div></div> <div>Cavaria (VA) Italy • www.bripac.it • info@bripac.it</div> <div>Information and data set forth here are disclosed in confidence and are proprietary and property of bripac srl and shall not, without its prior written permission, be used, duplicated or disclosed in whole or in part for any purpose other than authorized official business of bripac srl.</div>				DRAWN	S. B.
UNLESS OTHERWISE SPECIFIED:						DATE	17-10-2017
						SCALE	1:1
TOLERANCES: decimals ± 2mm angles ± 5°		dwg.no.		1.04			



Steel Cap

dwg.1.06-a

Standards ISO 11117:2008
TC/DOT:2007

for cylinders up to 140 kg.

engraving "a"

- bripac
- TC/DOT
- 125 kg.
- yy.zz

engraving "b"

- bripac
- ISO PA
- 140 kg.
- yy.zz

engraving "c"

- bripac
- ISO PA/ TCDOT
- 140 kg.
- yy.zz

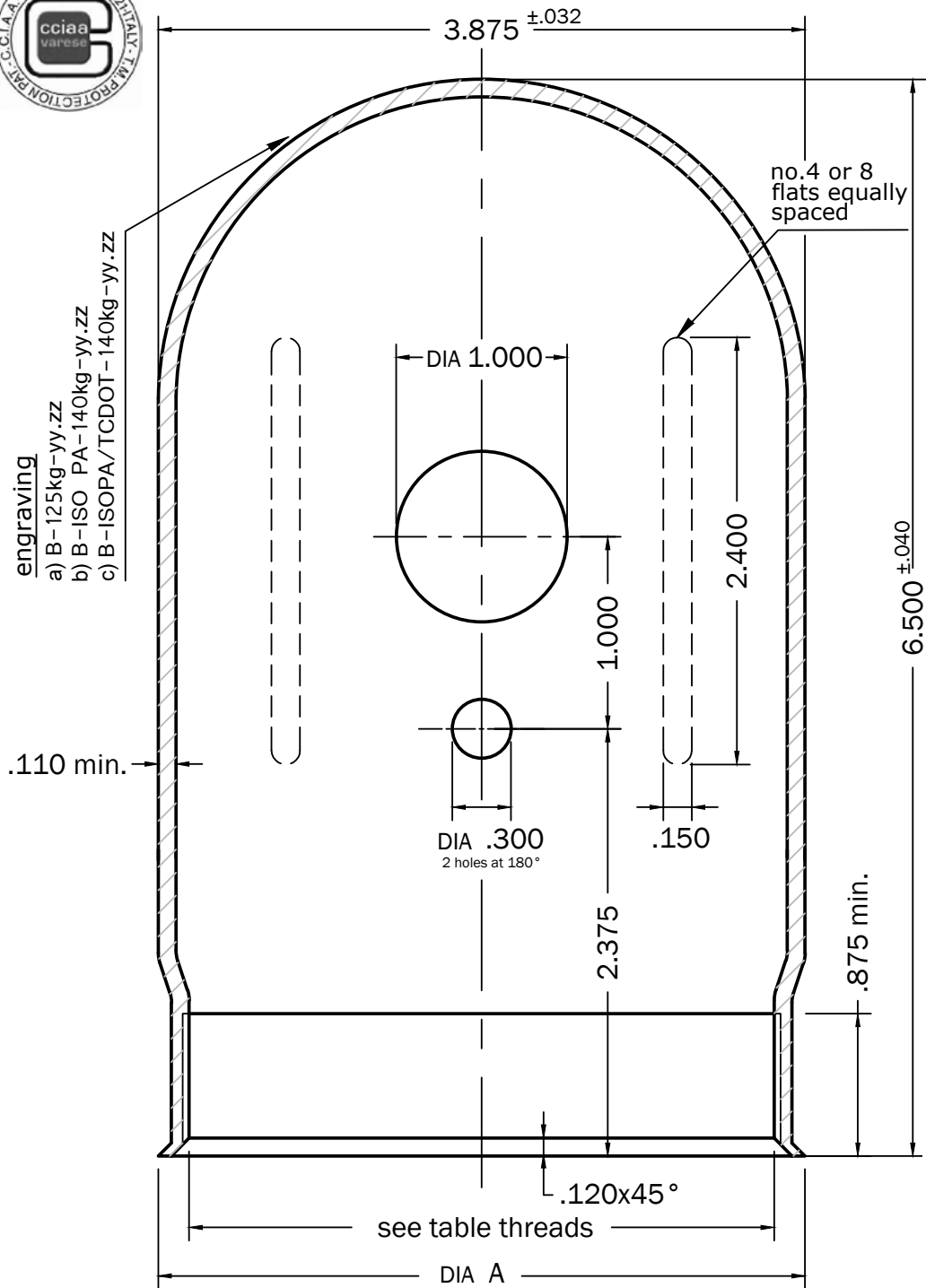
engraving

- LOGO

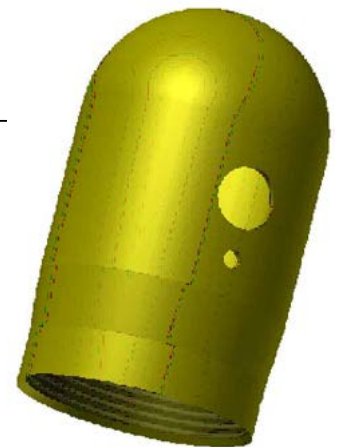


thread

- W80x11T.P.I.
- 3" 1/8x11U.N.
- 3" 1/2x11U.N.



- BRIPAC
- ISOPA/TCDOT
- 140 Kg
- yy.zz



pos.	table threads	DIA A
1.	W80x11T.P.I.	3,370
2.	3"1/8x11 UN	3,370
3.	3"1/2x11 UN	3,750
...	on request	...

REV.	CAP TC/DOT-ISO 11117		MATERIAL	STEEL	
CUSTOMER	CUST.DWG.	MATERIAL		CHECKED	M. B.
LIMITS OF ACCURACY	<div></div> <div>Cavaria (VA) Italy • www.bripac.it • info@bripac.it</div> <div><small>Information and data set forth here are disclosed in confidence and are proprietary and property of bripac srl and shall not, without its prior written permission, be used, duplicated or disclosed in whole or in part for any purpose other than authorized official business of bripac srl.</small></div>		DRAWN	S. B.	
UNLESS OTHERWISE SPECIFIED: TOLERANCES: decimals ± .080 angles ± 5°			DATE	17-10-2017	
			SCALE	1:1	
			dwg.no.	1.06-a	



Steel Cap

dwg.1.06-b

Standards ISO 11117:2008
TC/DOT:2007

for cylinders up to 140 kg.

engraving "a"

- **bripac**
- **TC/DOT**
- **125 kg.**
- **yy.zz**

engraving "b"

- **bripac**
- **ISO PA**
- **140 kg.**
- **yy.zz**

engraving "c"

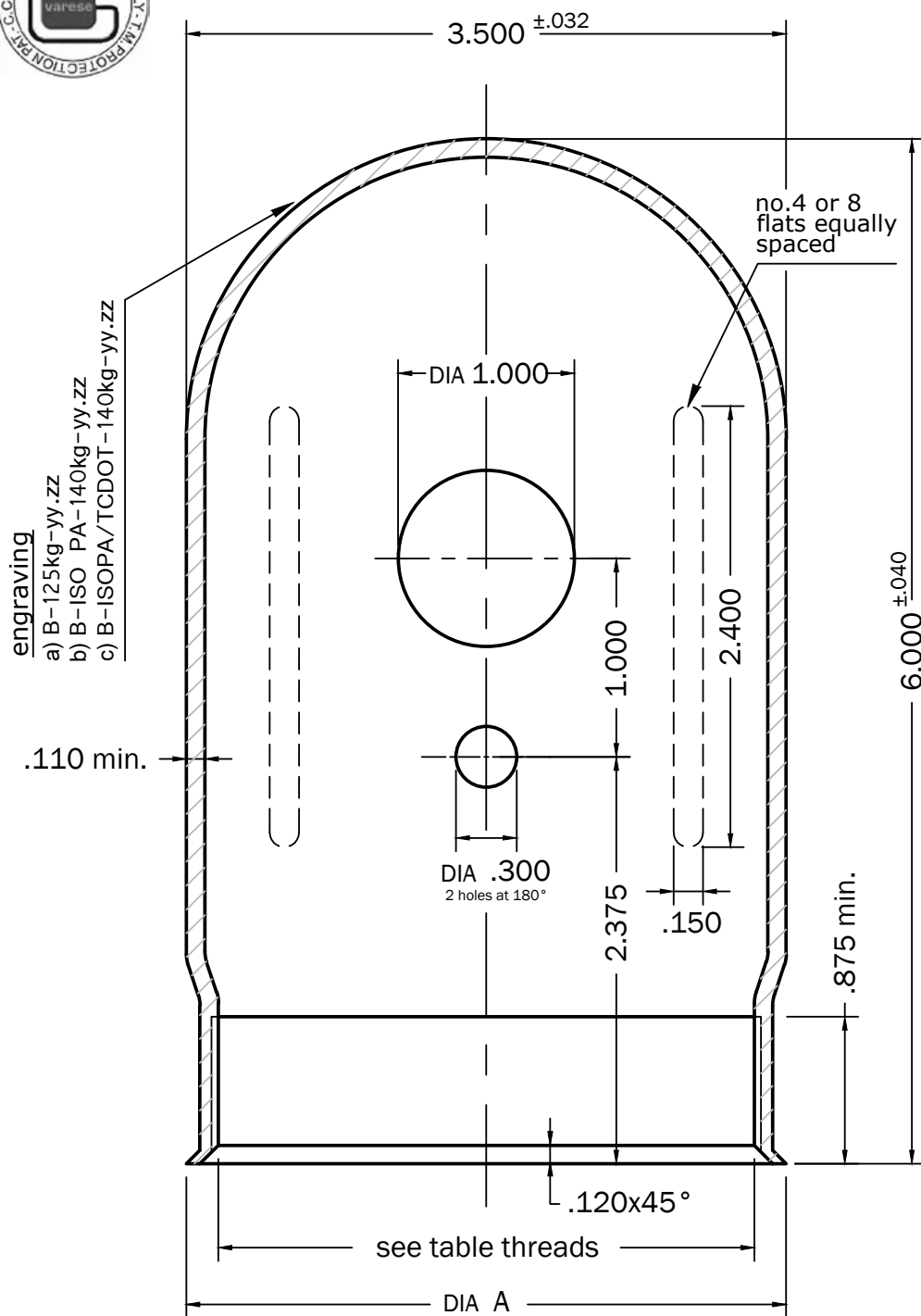
- **bripac**
- **ISO PA/ TCDOT**
- **140 kg.**
- **yy.zz**

engraving
• **LOGO**

thread

- **W80x11T.P.I.**
- **3" 1/8x11U.N.**





engraving "a"

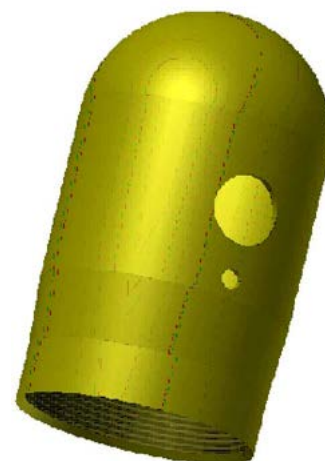
- BRIPAC
- TC/DOT
- 140 Kg
- yy.zz

engraving "b"

- BRIPAC
- ISO PA
- 140 Kg
- yy.zz

engraving "c"

- BRIPAC
- ISOPA/TCDOT
- 140 Kg
- yy.zz



pos.	table threads	DIA A
1.	W80x11T.P.I.	3,370
2.	3"1/8x11 UN	3,370
...	on request	...

REV.	CAP TC/DOT-ISO 11117	MATERIAL	STEEL	
CUSTOMER	CUST.DWG.	MATERIAL	CHECKED	M. B.
LIMITS OF ACCURACY	 Cavaria (VA) Italy • www.bripac.it • info@bripac.it		DRAWN	S. B.
UNLESS OTHERWISE SPECIFIED:			DATE	17-10-2017
			SCALE	1:1
TOLERANCES: decimals ± .080 angles ± 5°	Information and data set forth here are disclosed in confidence and are proprietary and property of bripac srl and shall not, without its prior written permission, be used, duplicated or disclosed in whole or in part for any purpose other than authorized official business of bripac srl.		dwg.no.	1.06-b



Steel Cap

dwg.1.07-a

Standards ISO 11117:2008
TC/DOT:2007
for cylinders up to 140 kg.

engraving "a"

- **bripac**
- **TC/DOT**
- **125 kg.**
- **yy.zz**

engraving "b"

- **bripac**
- **ISO PA**
- **140 kg.**
- **yy.zz**

engraving "c"

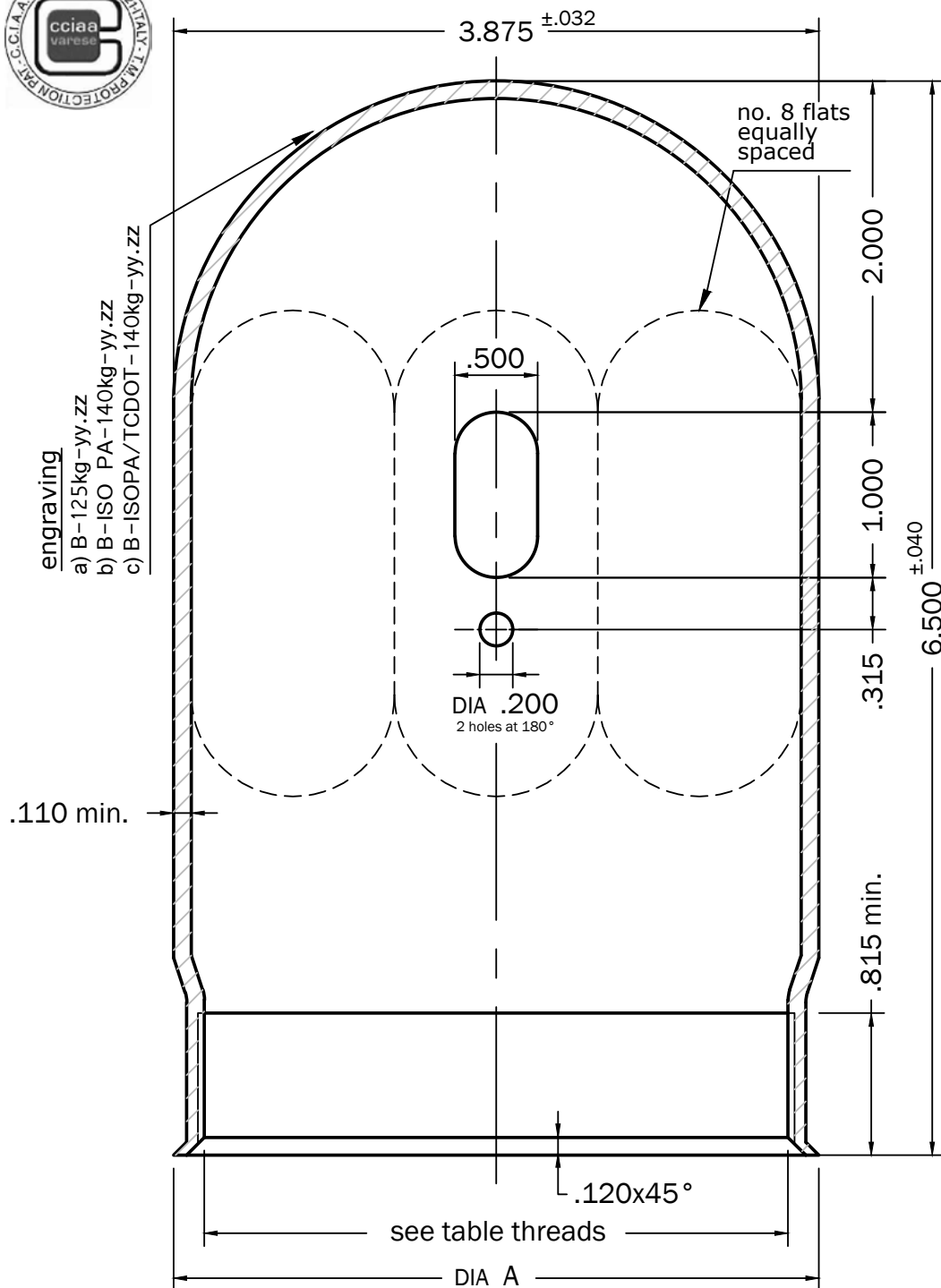
- **bripac**
- **ISO PA/ TCDOT**
- **140 kg.**
- **yy.zz**

engraving
• **LOGO**



thread

- **W80x11T.P.I.**
- **3" 1/8x11U.N.**
- **3" 1/2x11U.N.**



engraving "a"

- BRIPAC
- TC/DOT
- 140 Kg
- yy.zz

engraving "b"

- BRIPAC
- ISO PA
- 140 Kg
- yy.zz

engraving "c"

- BRIPAC
- ISOPA/TCDOT
- 140 Kg
- yy.zz



pos.	table threads	DIA A
1.	W80x11T.P.I.	3,370
2.	3"1/8x11 UN	3,370
3.	3"1/2x11 UN	3,750
...	on request	...

REV.	CAP TC/DOT-ISO 11117	MATERIAL	STEEL	
CUSTOMER	CUST.DWG.	MATERIAL	CHECKED	M. B.
LIMITS OF ACCURACY	 Cavaria (VA) Italy • www.bripac.it • info@bripac.it		DRAWN	S. B.
UNLESS OTHERWISE SPECIFIED:			DATE	17-10-2017
			SCALE	1:1
TOLERANCES: decimals $\pm .080$ angles $\pm 5^\circ$	Information and data set forth here are disclosed in confidence and are proprietary and property of bripac srl and shall not, without its prior written permission, be used, duplicated or disclosed in whole or in part for any purpose other than authorized official business of bripac srl.		dwg.no.	1.07-a



Steel Cap dwg.1.07-b

Standards ISO 11117:2008
TC/DOT:2007

for cylinders up to 140 kg.

engraving "a"

- bripac
- TC/DOT
- 125 kg.
- yy.zz

engraving "b"

- bripac
- ISO PA
- 140 kg.
- yy.zz

engraving "c"

- bripac
- ISO PA/ TCDOT
- 140 kg.
- yy.zz

engraving
• LOGO

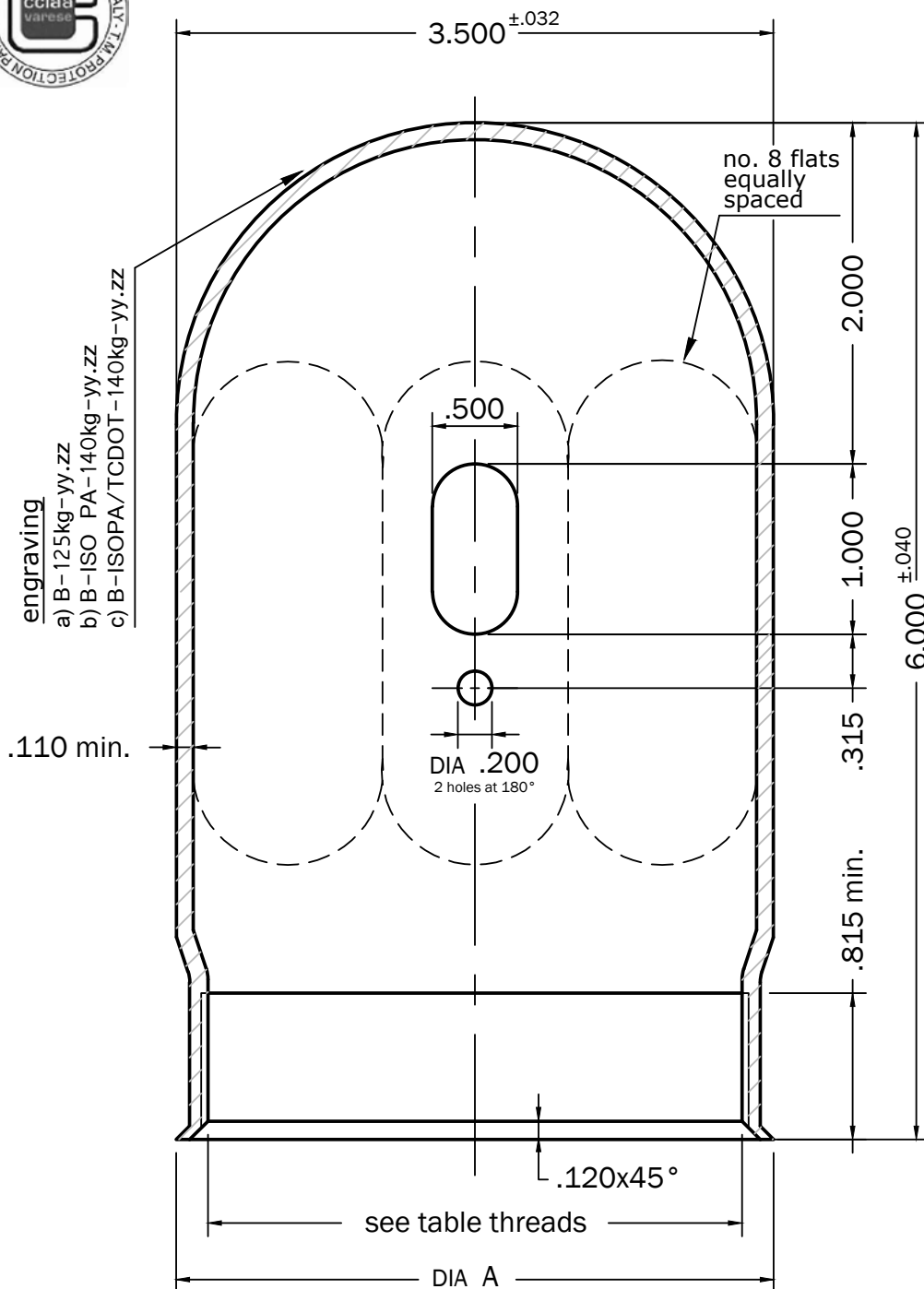
thread

- W80x11T.P.I.
- 3" 1/8x11U.N.





a) B-125kg-yy.zz
b) B-ISO PA-140kg-yy.zz
c) B-ISOPA/TCDOT-140kg-yy.zz



- BRIPAC
- ISOPA/TCDOT
- 140 Kg
- yy.zz



pos.	table threads	DIA A
1.	W80x11T.P.I.	3,370
2.	3"1/8x11 UN	3,370
...	on request	...

REV.	CAP TC/DOT-ISO 11117		MATERIAL	STEEL	
CUSTOMER		CUST.DWG.	MATERIAL	CHECKED	M. B.
LIMITS OF ACCURACY		<div></div> <div>Cavarina (VA) Italy • www.bripac.it • info@bripac.it</div> <div>Information and data set forth here are disclosed in confidence and are proprietary and property of bripac srl and shall not, without its prior written permission, be used, duplicated or disclosed in whole or in part for any purpose other than authorized official business of bripac srl.</div>		DRAWN	S. B.
UNLESS OTHERWISE SPECIFIED: TOLERANCES: decimals ± .080 angles ± 5°				DATE	17-10-2017
				SCALE	1:1
				dwg.no. 1.07-b	



Steel Cap

dwg.1.08-a

Standards ISO 11117:2008
TC/DOT:2007
for cylinders up to 140 kg.

engraving "a"

- **bripac**
- **TC/DOT**
- **125 kg.**
- **yy.zz**

engraving "b"

- **bripac**
- **ISO PA**
- **140 kg.**
- **yy.zz**

engraving "c"

- **bripac**
- **ISO PA/ TCDOT**
- **140 kg.**
- **yy.zz**

engraving
• **LOGO**

thread

- **W80x11T.P.I.**
- **3" 1/8x11U.N.**

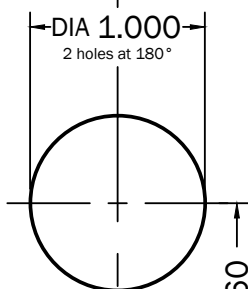
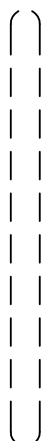




engraving
a) B-125kg-yy.zz
b) B-ISO PA-140kg-yy.zz
c) B-ISOPA/TCDOT-140kg-yy.zz

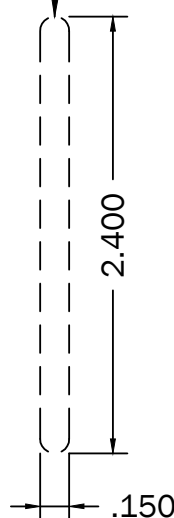
.110
min.

engraving



DIA .300
2 holes at 180°

no.4 or 8
flats equally
spaced



3.380

7.500 ±.040

.875 min

*see table threads

A

.120x45°

pos.	table threads	DIA A
1.	W80x11T.P.I.	3,370
2.	3"1/8x11 UN	3,370
3.	3"1/2x11 UN	3,750
...	on request	...

engraving "a"

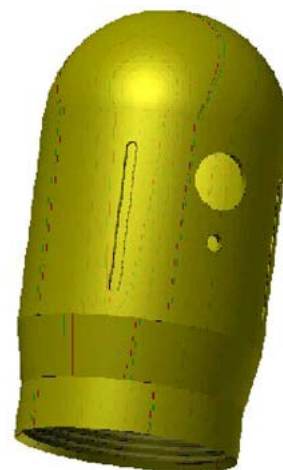
- BRIPAC
- TC/DOT
- 140 Kg
- yy.zz

engraving "b"

- BRIPAC
- ISO PA
- 140 Kg
- yy.zz

engraving "c"

- BRIPAC
- ISOPA/TCDOT
- 140 Kg
- yy.zz



REV.		CAP TC/DOT-ISO 11117		MATERIAL		STEEL	
CUSTOMER		CUST.DWG.		MATERIAL		CHECKED	M. B.
LIMITS OF ACCURACY		<div> Cavaria (VA) Italy • www.bripac.it • info@bripac.it</div> <div>Information and data set forth here are disclosed in confidence and are proprietary and property of bripac srl and shall not, without its prior written permission, be used, duplicated or disclosed in whole or in part for any purpose other than authorized official business of bripac srl.</div>				DRAWN	S. B.
UNLESS OTHERWISE SPECIFIED:						DATE	17-10-2017
						SCALE	1:1
						dwg.no.	1.08-a
TOLERANCES:							
decimals ± .080							
angles ± 5°							



Steel Cap

dwg.1.09

Standards ISO 11117:2008
for cylinders up to 160 kg.

engraving

- bripac
- ISO PA
- 160 kg.
- yy.zz



engraving

- LOGO



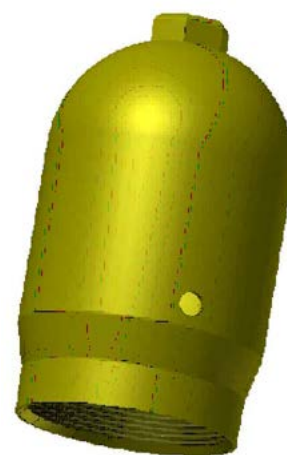
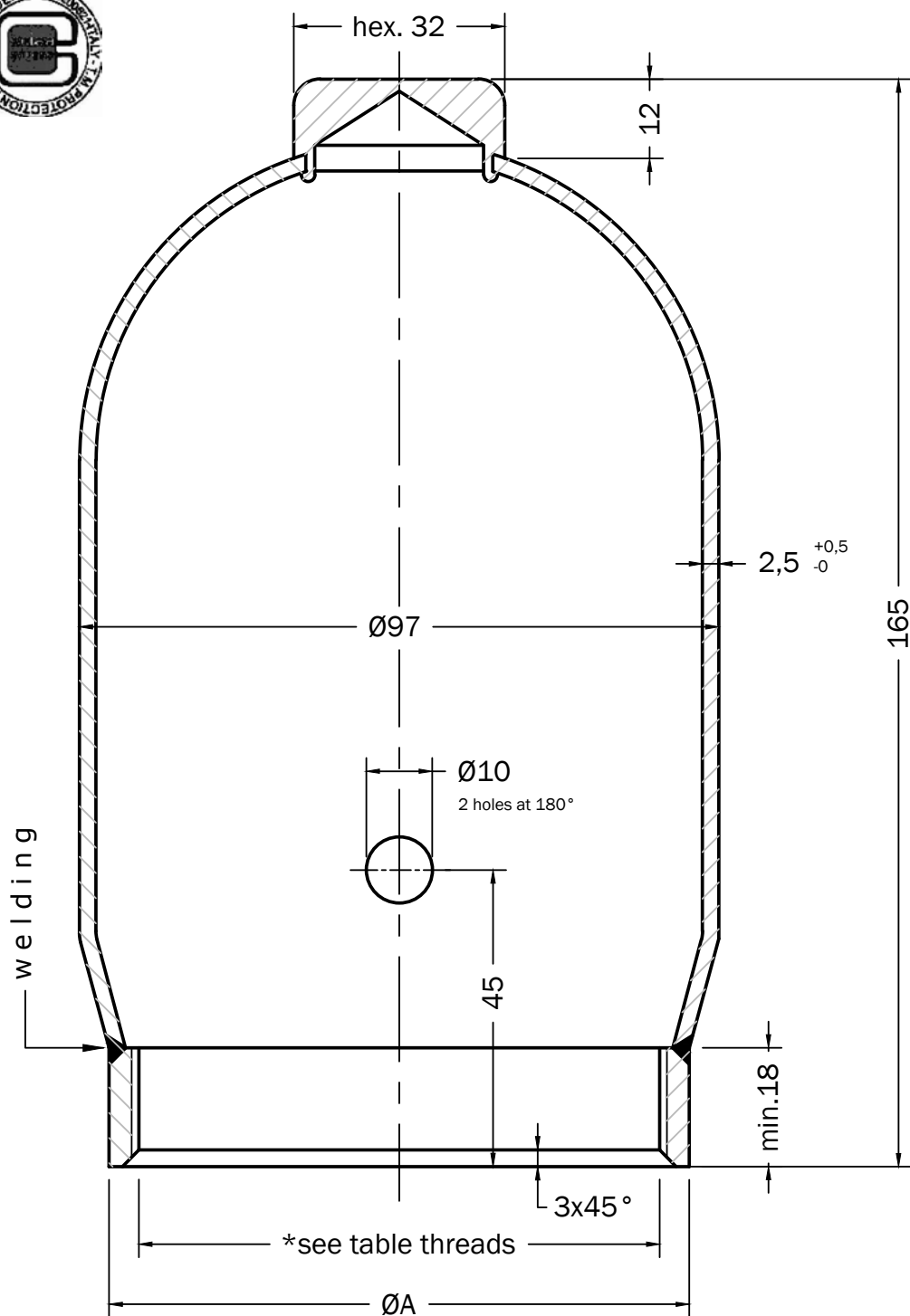
thread

- W80x11T.P.I.



engraving

- BRIPAC
- ISO PA
- 160 Kg
- yy.zz



pos.	table threads	ØA
1.	W80x11T.P.I.	88
2.	3"1/8x11U.N.	88
...	on request	...

REV.		CAP EN ISO 11117		MATERIAL		STEEL	
CUSTOMER		CUST.DWG.		MATERIAL		CHECKED	M. B.
LIMITS OF ACCURACY		<div> Cavaria (VA) Italy • www.bripac.it • info@bripac.it <small>Information and data set forth here are disclosed in confidence and are proprietary and property of bripac srl and shall not, without its prior written permission, be used, duplicated or disclosed in whole or in part for any purpose other than authorized official business of bripac srl.</small></div>				DRAWN	S. B.
UNLESS OTHERWISE SPECIFIED: TOLERANCES: decimals ± 2mm angles ± 5°						DATE	17-10-2017
						SCALE	1:1
						dwg.no.	1.09



Steel Cap

dwg.1.09-1

Standards ISO 11117:2008
for cylinders up to 160 kg.

engraving

- bripac
- ISO PA
- 160 kg.
- yy.zz



engraving

- LOGO



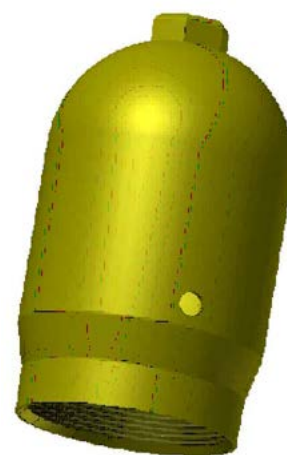
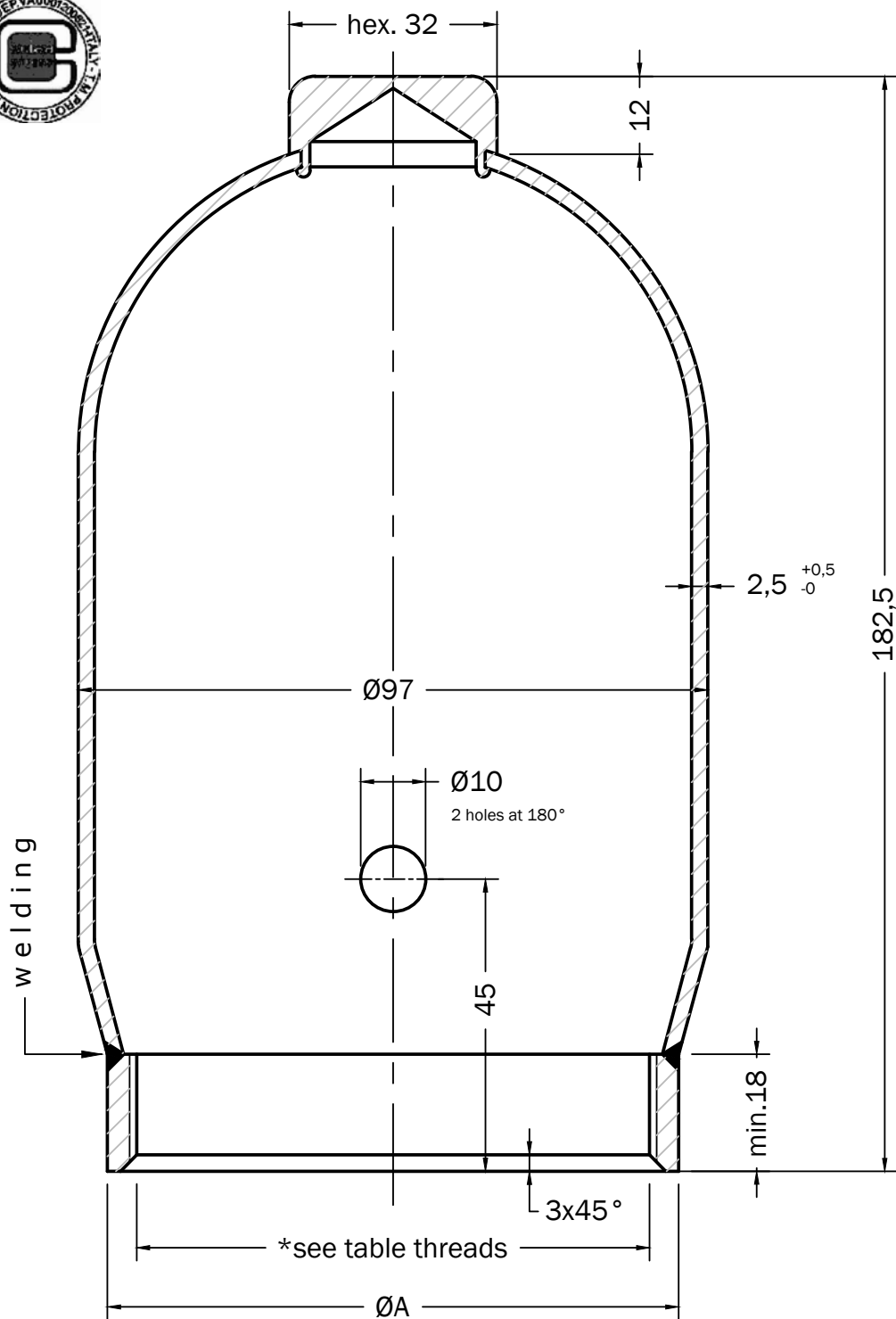
thread

- W80x11T.P.I.



engraving

- BRIPAC
- ISO PA
- 160 Kg
- yy.zz




pos.	table threads	ØA
1.	W80x11T.P.I.	88
2.	3"1/8x11U.N.	88
...	on request	...

REV.		CAP EN ISO 11117		MATERIAL		STEEL	
CUSTOMER		CUST.DWG.		MATERIAL		CHECKED	M. B.
LIMITS OF ACCURACY		<div> Cavarina (VA) Italy • www.bripac.it • info@bripac.it <small>Information and data set forth here are disclosed in confidence and are proprietary and property of bripac srl and shall not, without its prior written permission, be used, duplicated or disclosed in whole or in part for any purpose other than authorized official business of bripac srl.</small></div>				DRAWN	S. B.
UNLESS OTHERWISE SPECIFIED: TOLERANCES: decimals ± 2mm angles ± 5°						DATE	17-10-2017
						SCALE	1:1
						dwg.no.	1.09-1



Standards ISO 11117:2008 for LPG cylinders up to 50 kg.



REV.	LPG GUARD		MATERIAL	STEEL		
CUSTOMER		CUST.DWG.	MATERIAL		CHECKED	M. B.
LIMITS OF ACCURACY		<div></div> <div>Cavarina (VA) Italy • www.bripac.it • info@bripac.it</div> <div>Information and data set forth here are disclosed in confidence and are proprietary and property of bripac srl and shall not, without its prior written permission, be used, duplicated or disclosed in whole or in part for any purpose other than authorized official business of bripac srl.</div>			DRAWN	S. B.
UNLESS OTHERWISE SPECIFIED: TOLERANCES: decimals ± 2mm angles ± 5°					DATE	17-10-2017
					SCALE	1:1
					dwg.no.	



Steel Guard

dwg. I.30

Standards ISO 11117:2008
for cylinders up to 140 kg.

ring dia. 14 mm

engraving

- bripac
- ISO PA
- 140 kg.
- yy.zz

engraving

- LOGO



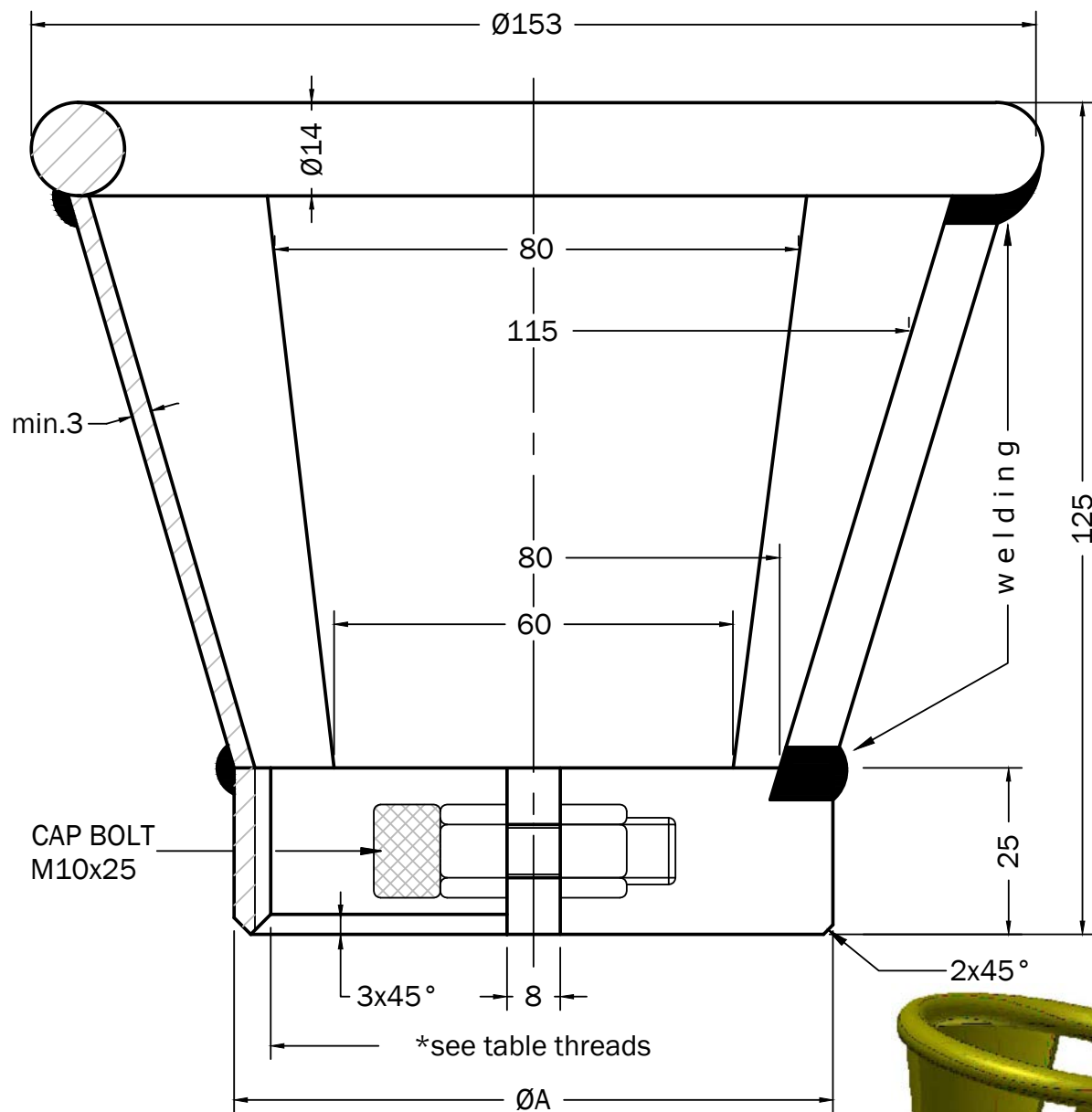
thread

- W80x11T.P.I.
- 3"1/8x11U.N.
- 3"1/2x11U.N.



engraving

- BRIPAC
- ISO PA
- 140 Kg
- yy.zz



pos.	table threads	ØA
1.	W80x11T.P.I.	90
2.	3"1/8x11T.P.I.	90
3.	3"1/2x11T.P.I.	95
...	on request	...



REV.	GUARD EN ISO 11117		MATERIAL	STEEL	
CUSTOMER		CUST.DWG.	MATERIAL	CHECKED	M. B.
LIMITS OF ACCURACY		<div></div> <div>Cavaria (VA) Italy • www.bripac.it • info@bripac.it</div> <div>Information and data set forth here are disclosed in confidence and are proprietary and property of bripac srl and shall not, without its prior written permission, be used, duplicated or disclosed in whole or in part for any purpose other than authorized official business of bripac srl.</div>		DRAWN	S. B.
UNLESS OTHERWISE SPECIFIED: TOLERANCES: decimals ± 2mm angles ± 5°				DATE	17-10-2017
				SCALE	1:1
				dwg.no.	1.30



Steel Guard

dwg.l.30-a

Standards ISO 11117:2008
for all type of cylinders

ring dia.14 mm

engraving

- bripac
- yy.zz

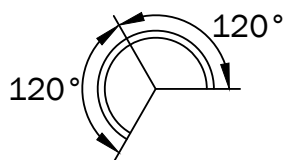
engraving

- LOGO



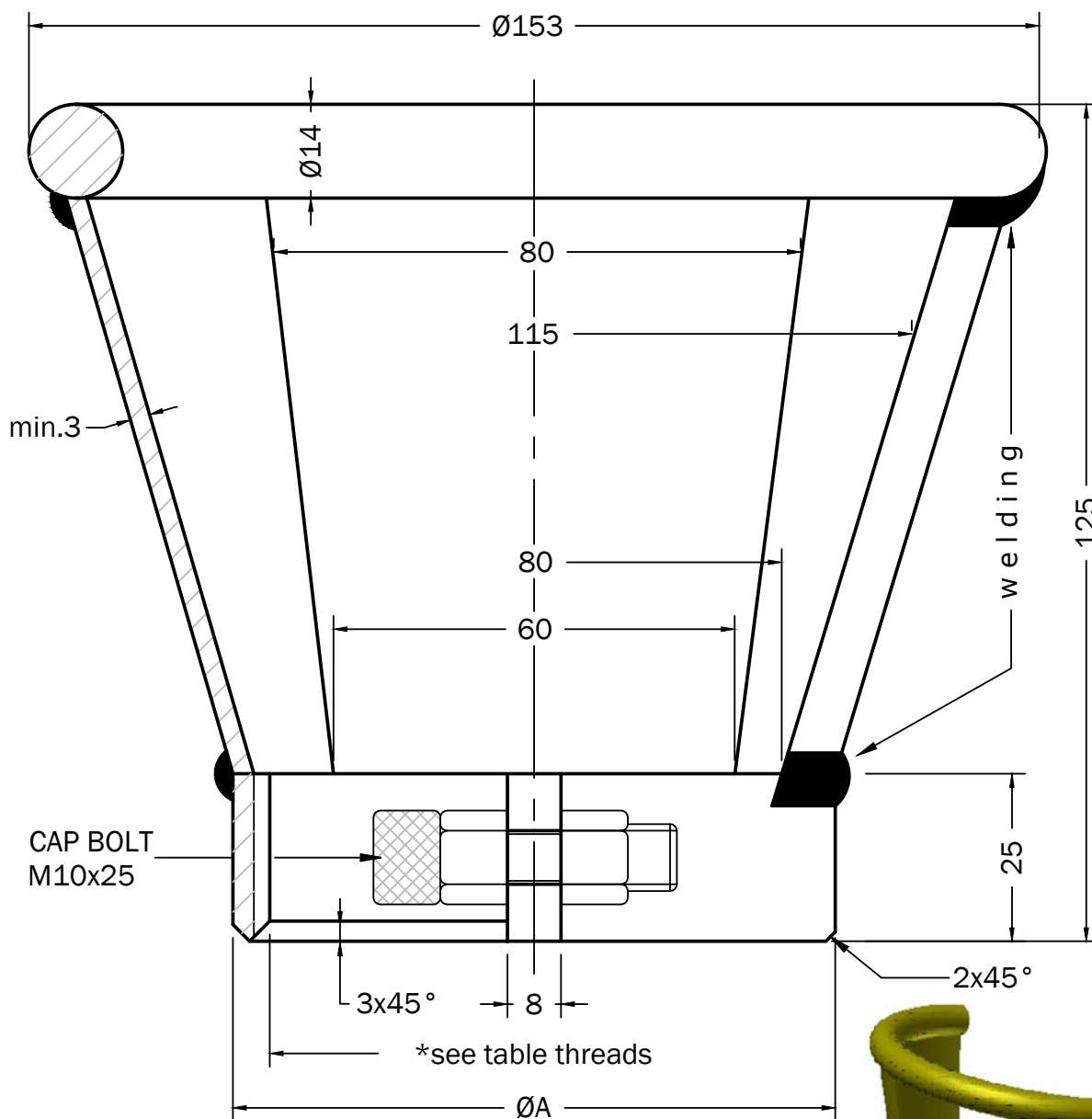
thread

- W80x11T.P.I.
- 3"1/8x11U.N.
- 3"1/2x11U.N.




engraving

- BRIPAC
- yy.zz



pos.	table threads	$\varnothing A$
1.	W80x11T.P.I.	90
2.	3"1/8x11T.P.I.	90
3.	3"1/2x11T.P.I.	95
...	on request	...

REV.	GUARD		MATERIAL	STEEL	
CUSTOMER	CUST.DWG.	MATERIAL		CHECKED	M. B.
LIMITS OF ACCURACY	<div> Cavaria (VA) Italy • www.bripac.it • info@bripac.it</div> <div>Information and data set forth here are disclosed in confidence and are proprietary and property of bripac srl and shall not, without its prior written permission, be used, duplicated or disclosed in whole or in part for any purpose other than authorized official business of bripac srl.</div>		DRAWN		S. B.
UNLESS OTHERWISE SPECIFIED:			DATE		17-10-2017
			SCALE		1:1
			dwg.no.		1.30-a
TOLERANCES: decimals ± 2mm angles ± 5°					



Standards ISO 11117:2008 for cylinders up to 140 kg.

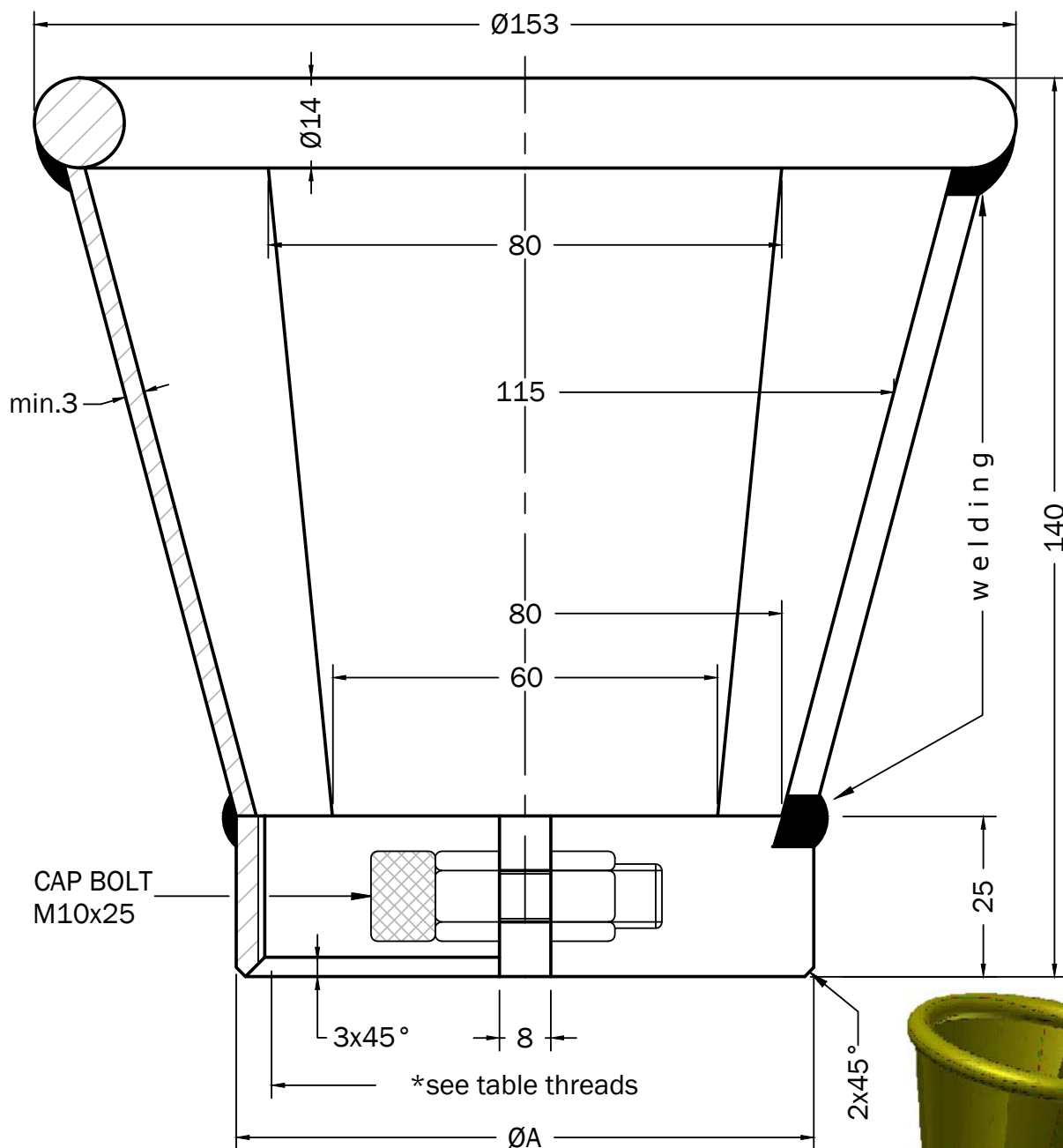
- W80x11T.P.I.
- 3"1/8x11U.N.
- 3"1/2x11U.N.





engraving

- BRIPAC
- ISO PA
- 140 Kg
- yy.zz



pos.	table threads	ØA
1.	W80x11T.P.I.	90
2.	3"1/8x11T.P.I.	90
3.	3"1/2x11T.P.I.	95
...	on request	...

REV.	GUARD EN ISO 11117		MATERIAL	STEEL	
CUSTOMER		CUST.DWG.	MATERIAL	CHECKED	M. B.
LIMITS OF ACCURACY		 Cavarina (VA) Italy • www.bripac.it • info@bripac.it		DRAWN	S. B.
UNLESS OTHERWISE SPECIFIED: TOLERANCES: decimals ± 2mm angles ± 5°				DATE	17-10-2017
				SCALE	1:1
		Information and data set forth here are disclosed in confidence and are proprietary and property of bripac srl and shall not, without its prior written permission, be used, duplicated or disclosed in whole or in part for any purpose other than authorized official business of bripac srl.		dwg.no.	1.33

REV.	GUARD EN ISO 11117		MATERIAL	STEEL	
CUSTOMER		CUST.DWG.	MATERIAL	CHECKED	M. B.
LIMITS OF ACCURACY				DRAWN	S. B.
UNLESS OTHERWISE SPECIFIED: TOLERANCES: decimals ± 2mm angles ± 5°				DATE	17-10-2017
				SCALE	1:1
				dwg.no. 1.33-a	
		Cavaria (VA) Italy • www.bripac.it • info@bripac.it <small>Information and data set forth here are disclosed in confidence and are proprietary and property of bripac srl and shall not, without its prior written permission, be used, duplicated or disclosed in whole or in part for any purpose other than authorized official business of bripac srl.</small>			



Steel Guard

dwg.1.35-a

Standards ISO 11117:2008
for cylinders up to 140 kg.

ring dia.16 mm

engraving

- bripac
- ISO PA
- 140 kg.
- yy.zz



thread

- W80x11T.P.I.
- 3"1/8x11U.N.

Screw inside the ring
for safety

REV.	GUARD EN ISO 11117		MATERIAL	STEEL	
CUSTOMER		CUST.DWG.	MATERIAL	CHECKED	M. B.
LIMITS OF ACCURACY				DRAWN	S. B.
UNLESS OTHERWISE SPECIFIED: TOLERANCES: decimals ± 2mm angles ± 5°				DATE	17-10-2017
				SCALE	1:1
				Cavarina (VA) Italy • www.bripac.it • info@bripac.it Information and data set forth here are disclosed in confidence and are proprietary and property of bripac srl and shall not, without its prior written permission, be used, duplicated or disclosed in whole or in part for any purpose other than authorized official business of bripac srl.	
			dwg.no.	1.35-a	



Steel Guard

dwg.1.40-a

Standards ISO 11117:2008
for cylinders up to 160 kg.

grip

engraving

- **bripac**
- **ISO PA**
- **160 kg.**
- **yy.zz**



thread

- **W80x11T.P.I.**

Screw inside the ring for safety

REV.	GUARD EN ISO 11117		MATERIAL	C40	
CUSTOMER		CUST.DWG.	MATERIAL	CHECKED	M. B.
LIMITS OF ACCURACY		<div></div> <div>Cavarina (VA) Italy • www.bripac.it • info@bripac.it</div> <div>Information and data set forth here are disclosed in confidence and are proprietary and property of bripac srl and shall not, without its prior written permission, be used, duplicated or disclosed in whole or in part for any purpose other than authorized official business of bripac srl.</div>		DRAWN	S. B.
UNLESS OTHERWISE SPECIFIED: TOLERANCES: decimals ± 2mm angles ± 5°				DATE	17-10-2017
				SCALE	1:1,5
				dwg.no. 1.40-a	



Steel Guard

dwg.1.42

Standards ISO 11117:2008
for cylinders up to 160 kg.

grip

engraving

- bripac
- ISO PA
- 160 kg.
- yy.zz

space for chip



thread

- W80x11T.P.I.



REV. 2	GUARD EN ISO 11117		MATERIAL	C40	
CUSTOMER		CUST.DWG.	MATERIAL	CHECKED	M. B.
LIMITS OF ACCURACY		<div></div> <div>Cavarina (VA) Italy • www.bripac.it • info@bripac.it</div> <div>Information and data set forth here are disclosed in confidence and are proprietary and property of bripac srl and shall not, without its prior written permission, be used, duplicated or disclosed in whole or in part for any purpose other than authorized official business of bripac srl.</div>		DRAWN	S. B.
UNLESS OTHERWISE SPECIFIED: TOLERANCES: decimals ± 2mm angles ± 5°				DATE	17-10-2017
				SCALE	1:1,5
				dwg.no. 1.42	



ABS & Nylon Guard

dwg.BB.01

Standards ISO 11117:2008

*for cylinders up to 30 kg.
for cylinders up to 50 kg.*

pad printing
1 or 2 sides
LOGO and/or
Instructions
30 kg. - 50 kg.

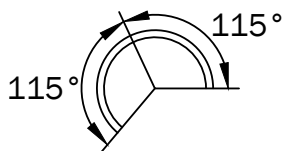


label



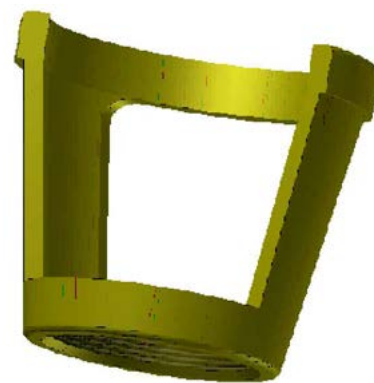
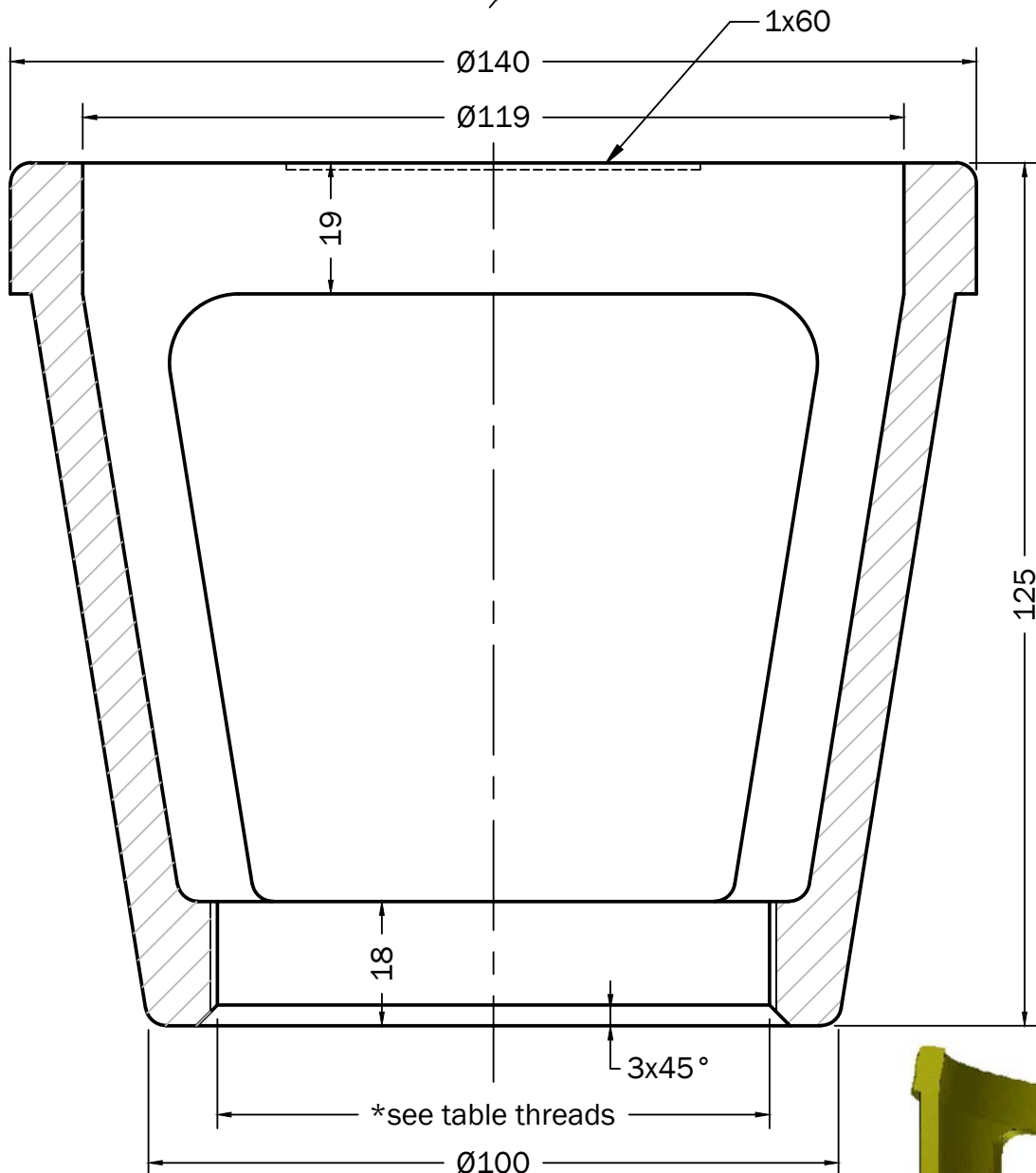
thread

- W80x11T.P.I.
- 3"1/8x11U.N.



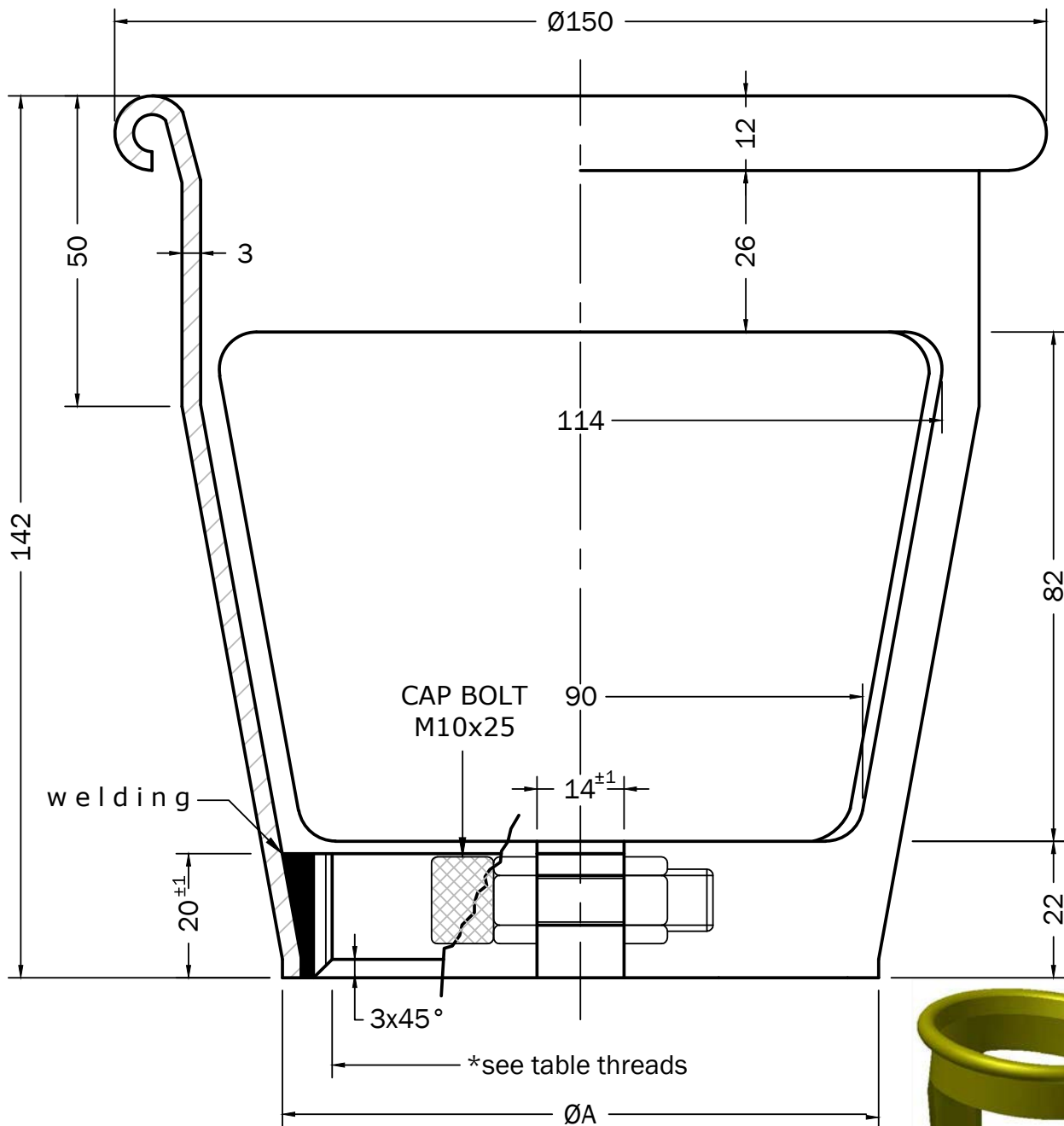
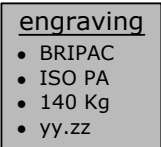
engraving

- BRIPAC
- ISO PA
- 30 - 50 Kg
- yy.zz



pos.	table threads
1.	W80x11T.P.I.
...	on request

REV.		GUARD EN ISO 11117		MATERIAL		ABS / NYLON	
CUSTOMER		CUST.DWG.		MATERIAL		CHECKED	M. B.
LIMITS OF ACCURACY		<div> Cavarina (VA) Italy • www.bripac.it • info@bripac.it</div> <div>Information and data set forth here are disclosed in confidence and are proprietary and property of bripac srl and shall not, without its prior written permission, be used, duplicated or disclosed in whole or in part for any purpose other than authorized official business of bripac srl.</div>				DRAWN	S. B.
UNLESS OTHERWISE SPECIFIED: TOLERANCES: decimals ± 2mm angles ± 5°						DATE	17-10-2017
						SCALE	1:1
						dwg.no.	BB.01



pos.	table threads	ØA
1.	W80x11T.P.I.	96
...	on request	...
threads checked after zinc or painting		

REV.	GUARD EN ISO 11117		MATERIAL	STEEL	
CUSTOMER		CUST.DWG.	MATERIAL	CHECKED	M. B.
LIMITS OF ACCURACY				DRAWN	S. B.
UNLESS OTHERWISE SPECIFIED: TOLERANCES: decimals ± 2,5mm angles ± 5°				DATE	17-10-2017
				SCALE	1:1
				Cavarina (VA) Italy • www.bripac.it • info@bripac.it <small>Information and data set forth here are disclosed in confidence and are proprietary and property of bripac srl and shall not, without its prior written permission, be used, duplicated or disclosed in whole or in part for any purpose other than authorized official business of bripac srl.</small>	
				dwg.no.	BB.03-1

2020



January

wk	Mon	Tue	Wed	Thu	Fri	Sat	Sun
1			1	2	3	4	5
2	6	7	8	9	10	11	12
3	13	14	15	16	17	18	19
4	20	21	22	23	24	25	26
5	27	28	29	30	31		

February

wk	Mon	Tue	Wed	Thu	Fri	Sat	Sun
5						1	2
6	3	4	5	6	7	8	9
7	10	11	12	13	14	15	16
8	17	18	19	20	21	22	23
9	24	25	26	27	28	29	

March

wk	Mon	Tue	Wed	Thu	Fri	Sat	Sun
9							1
10	2	3	4	5	6	7	8
11	9	10	11	12	13	14	15
12	16	17	18	19	20	21	22
13	23	24	25	26	27	28	29
14	30	31					

April

wk	Mon	Tue	Wed	Thu	Fri	Sat	Sun
14			1	2	3	4	5
15	6	7	8	9	10	11	12
16	13	14	15	16	17	18	19
17	20	21	22	23	24	25	26
18	27	28	29	30			

May

wk	Mon	Tue	Wed	Thu	Fri	Sat	Sun
18					1	2	3
19	4	5	6	7	8	9	10
20	11	12	13	14	15	16	17
21	18	19	20	21	22	23	24
22	25	26	27	28	29	30	31

June

wk	Mon	Tue	Wed	Thu	Fri	Sat	Sun
23	1	2	3	4	5	6	7
24	8	9	10	11	12	13	14
25	15	16	17	18	19	20	21
26	22	23	24	25	26	27	28
27	29	30					

July

wk	Mon	Tue	Wed	Thu	Fri	Sat	Sun
27			1	2	3	4	5
28	6	7	8	9	10	11	12
29	13	14	15	16	17	18	19
30	20	21	22	23	24	25	26
31	27	28	29	30	31		

August

wk	Mon	Tue	Wed	Thu	Fri	Sat	Sun
31						1	2
32	3	4	5	6	7	8	9
33	10	11	12	13	14	15	16
34	17	18	19	20	21	22	23
35	24	25	26	27	28	29	30
36	31						

September

wk	Mon	Tue	Wed	Thu	Fri	Sat	Sun
36		1	2	3	4	5	6
37	7	8	9	10	11	12	13
38	14	15	16	17	18	19	20
39	21	22	23	24	25	26	27
40	28	29	30				

October

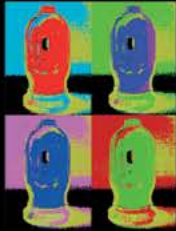
wk	Mon	Tue	Wed	Thu	Fri	Sat	Sun
40				1	2	3	4
41	5	6	7	8	9	10	11
42	12	13	14	15	16	17	18
43	19	20	21	22	23	24	25
44	26	27	28	29	30	31	

November

wk	Mon	Tue	Wed	Thu	Fri	Sat	Sun
44							1
45	2	3	4	5	6	7	8
46	9	10	11	12	13	14	15
47	16	17	18	19	20	21	22
48	23	24	25	26	27	28	29
49	30						

December

wk	Mon	Tue	Wed	Thu	Fri	Sat	Sun
49		1	2	3	4	5	6
50	7	8	9	10	11	12	13
51	14	15	16	17	18	19	20
52	21	22	23	24	25	26	27
53	28	29	30	31			



HE NEVER DID LIKE THAT!



TOGETHER • AGAIN • SIGHING • THE • FUTURE



MORE • THAN • A • SIMPLE • CAP & NECK



PURE • ENERGY



YES WE CAN!



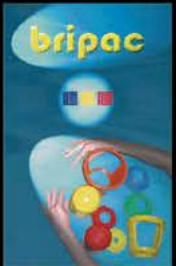
KEEP • ON • RUNNING



FUTURE • NEEDS • OUR • HISTORY



IMPORTANTS • & • SUPPORTING



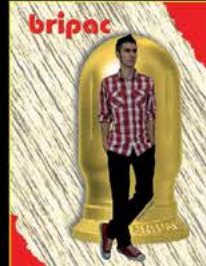
WHEN • DETAILS • MAKE • THE • DIFFERENCE



在全球的合作更加紧密和强大



BRAND • THE • QUALITY



MORE • TO • COME



ALWAYS • OUR • TARGET



QUALITY • & • SAFETY



QUALITY-PASSION-WORLDWIDE



-2017- EVOLUTION-



2018 • SOMETIMES NO WORDS REQUIRED



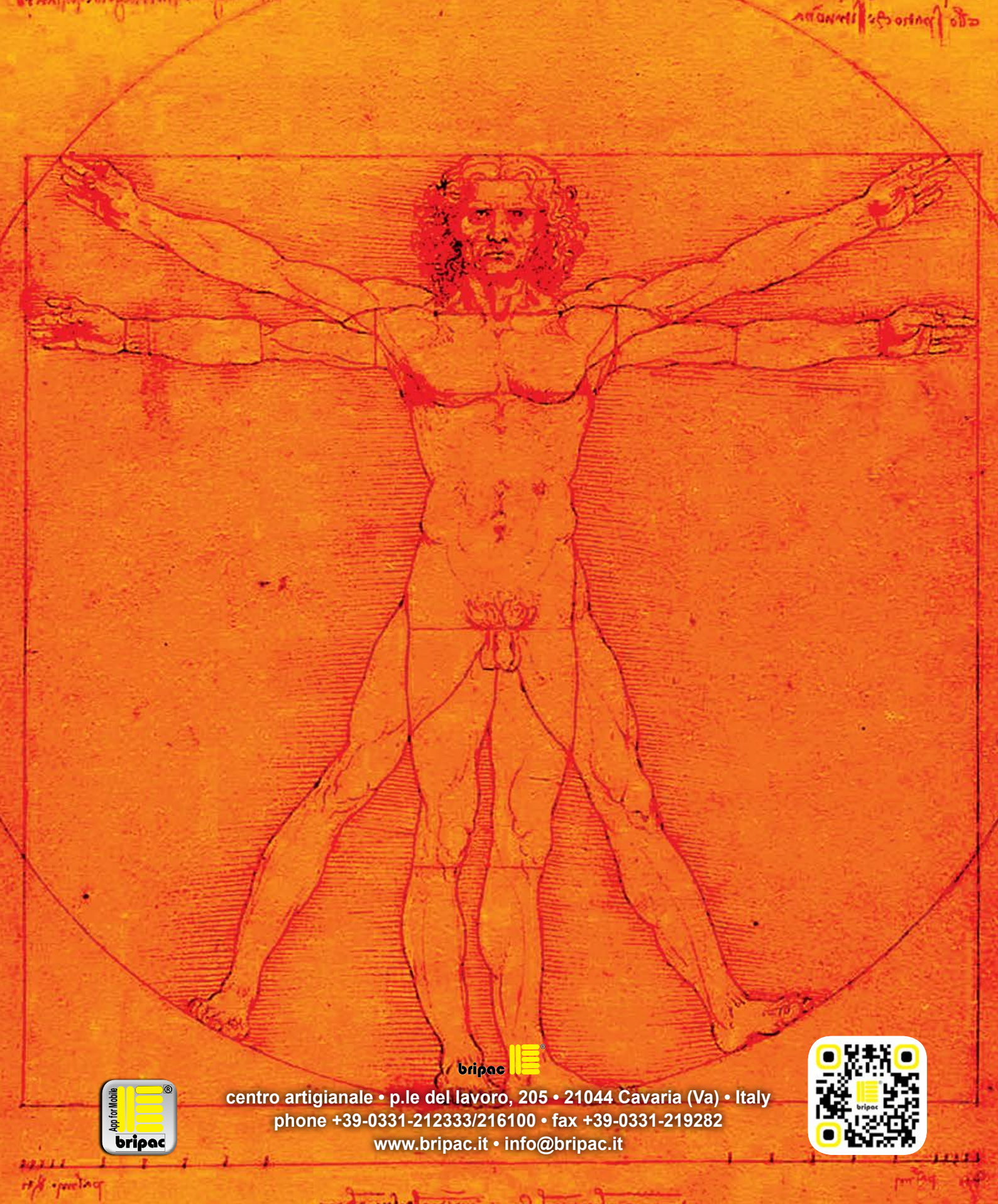
2019 • QUALITY'S TOUCH



2020 • EXCELLENCE

History





centro artigianale • p.le del lavoro, 205 • 21044 Cavarina (Va) • Italy
phone +39-0331-212333/216100 • fax +39-0331-219282
www.bripac.it • info@bripac.it



Pls find here below a link,
from which you'll be able to download our New 2020 Catalogue
<http://www.bripac.it/Catalogue2020.pdf>